

Detail from *Sunset* by Gan Kolski

# THE NAPI AND HELEN VAN DERECK COLLECTION: PART III

April 16–July 25, 2021

Curated by Christine McCarthy



460 COMMERCIAL STREET | PROVINCETOWN MA | PAAM.ORG | 508.487.1750

## VAN DERECK COLLECTION: PART III



Detail from *Mr. Caliga's Studio* by Oliver Newberry Chaffee Jr.

This third installment of the Napi and Helen Van Dereck Collection features the work of an array of historic Provincetown artists, including Evelin Bodfish Bourne, Oliver Chaffee, William Halsall, Charles Hawthorne, Blanche Lazzell, and Lillian Meeser, among others. Napi passed away on Christmas Day, 2019 and, in the time since, we have honored his legacy and keen eye through two exhibitions of his collection. Part III adds to the rich and historically significant Provincetown narrative that Napi

developed while collecting. Every work has a story—the scenes of Town represent “the way it used to was.” Each artwork was carefully selected for a personal reason and he could tell you, in detail, the back story. We are so grateful to Helen Van Dereck for allowing PAAM to exhibit this unprecedented collection and I would personally like to thank Jim Bakker for his assistance in getting this body of work together.

—Christine McCarthy, Curator and CEO, PAAM



Detail from *Trapboat* by Billie Miller Da Roza

**LaForce Bailey** (1893–1962)  
*Strollers*, c. 1939  
Watercolor on paper, 21" x 30"

**Samir Barber** (b. 1943)  
*Overlooking the Harbor*, n.d.  
Oil on panel 16" x 20"

**Gerrit Beneker** (1882–1934)  
*Provincetown*, 1918  
Oil on panel, 11.5" x 15.5"

**Margaretta Gratz Brown** (1884–1932)  
*Commercial Street*, n.d.  
Oil on panel, 9" x 12"

**Oliver Newberry Chaffee, Jr.** (1881–1944)  
*Mr. Caliga's Studio*, 1929  
Watercolor on paper, 21.5" x 14"

**Billie Miller Da Roza** (1913–1988)  
*Trapboat*, 1939  
Watercolor on paper, 14" x 19.75"

## VAN DERECK COLLECTION: PART III



Detail from *Summer Landscape* by Daisy Marguerite Hughes

**Arthur Diehl** (1870–1929)

*Provincetown*, 1913

Oil on panel, 24" x 12"

**Raymond J. Eastwood** (1898–1987)

*Dunes*, 1946

Oil on canvas, 20" x 24"

**Nancy Maybin Ferguson** (1872–1967)

*Commercial Street*, c. 1920s

Oil on canvas, 32" x 40"

**William Formby Halsall** (1841–1919)

*Winter in the Harbor*, c. 1902

Oil on canvas, 10" x 14"

**Charles Hawthorne** (1872–1930)

untitled (children on beach), n.d.

Watercolor on paper, 13.25" x 21.5"

**Daisy Marguerite Hughes** (1882–1968)

*Provincetown Waterfront*, n.d.

Oil on panel, 12.25" x 16.25"

*Summer Landscape*, n.d.

Oil on canvas, 20" x 28"

**Gan Kolski** (1899–1932)

*Sunset*, 1931

Woodblock print, 8" x 10"

**Jackson Lambert** (1919–2011)

*Pat Bruno Bicycling up Freeman Street During a Snowstorm*, 1984

Oil on canvas, 44" x 36"

*At the Corner of Standish and Bradford*, c. 1985

Felt-tip marker on paper, 10.5" x 14.5"



Detail from *untitled (view through a window)* by Mildred McMillen

*7 Freeman Street*, 1989

Felt-tip marker on paper, 14.5" x 19"

**Blanche Lazzell** (1878–1956)

*untitled (houses and figures)*, 1925

Oil on panel, 13.75" x 15.75"

**Tod Raphael Leroy Lindenmuth** (1885–1976)

*The Fishing Fleet*, c. 1925

Linocut print, 10.75" x 14"

**Harold Marrat Lund** (1904–1944)

*Standish Street*, n.d.

Watercolor on paper, 17.75" x 21"

**Bruce McKain** (1900–1990)

*Winter*, n.d.

Oil on canvas, 24" x 30"

*Winter Harbor*, n.d.

Oil on canvas, 22" x 30"

*Provincetown Looking West*, n.d.

Oil on canvas, 30" x 36"

**Mildred McMillen** (1884–1940)

*untitled (view through a window)*, 1916

Woodblock print, 11" x 9"

*Provincetown Theatre*, 1920

Woodblock print, 16.5" x 12.5"

**Lillian Burk Meeser** (1864–1942)

*untitled (figures in street)*, n.d.

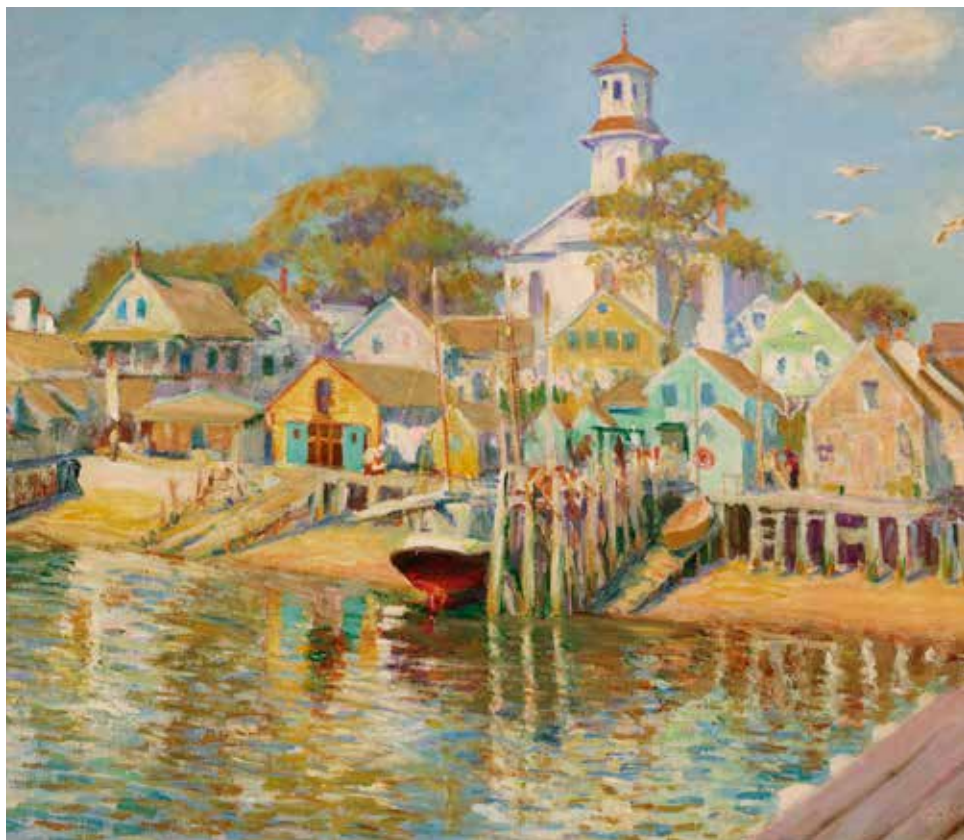
Oil on canvas, 14" x 12"

**Frank Milby** (b. 1933)

*Provincetown Skyline and Gulls*, n.d.

Oil on canvas, 22" x 36"

## VAN DERECK COLLECTION: PART III



Detail from *Provincetown* by John Rettig

**Ross Moffett** (1888–1971)

*Sketch for a Painting—Sklaroff's Wharf*, n.d.

Oil on paper, 12" x 16"

untitled (coastguardsmen), c. 1942

Oil on canvas, 14" x 20"

*Mending a Net*, n.d.

Oil on paper, 11" x 16"

**Robert Hogg Nisbet** (1879–1961)

*Provincetown*, n.d.

Oil on panel, 12" x 16"

**Fritz Wilhelm Pfeiffer** (1889–1960)

*Commercial Street*, 1924

Oil on canvas, 21" x 22"

**John Rettig** (1855–1932)

*Provincetown*, n.d.

Oil on canvas, 26" x 36"

**Wendell M. Rogers** (1890–1973)

*Harbor*, n.d.

Oil on canvas, 30" x 36"

**Kathryn Lee Smith** (b. 1953)

*Daylillies II*, 2006

Color wood block print, 21" x 34"

*New Blossoms, Ancient Tile III*, 2004

Color wood block print, 21" x 34"

**Minni Rogers Steele** (1860–1940)

*The Sally Annie*, 1923

Oil on canvas, 18" x 22"

**Artist unknown** (19<sup>th</sup>–20<sup>th</sup> century)

untitled (figures on beach), c. 1900

Oil on panel, 13.5" x 16"



Detail from *Boats at Higgins Wharf* by George Yater

**John Whorf** (1903–1959)

*Rainy Day in Provincetown*, n.d.

Watercolor on paper, 14.75" x 21"

*Boat in Storm*, 1921

Watercolor on paper, 15" x 20"

**Sol Wilson** (1896–1974)

*Men with Net*, n.d.

Oil on canvas, 8" x 10"

*Cape Cod Dunes*, n.d.

Oil on panel, 8" x 10"

**William Woodward** (1859–1939)

*Provincetown*, c. 1890

Oil on panel, 8.5" x 13.5"

**George Yater** (1910–1993)

untitled (barrell traps), n.d.

Watercolor on paper, 16" x 21.5"

untitled (figures in street

at railroad crossing), n.d.

Watercolor on paper, 17" x 22"

*Bradford and Dyer Street House, Winter*, n.d.

Watercolor on paper, 24" x 18"

untitled (harbor sunset), n.d.

Watercolor on paper, 17.5" x 23.5"

*Boats at Higgins Wharf*, n.d.

Watercolor on paper, 20" x 27"

**Helen Walcott Young** (1894–unknown)

*Schooner at Wharf*, 1924

Watercolor on paper, 14" x 21.5"

# PROVINCETOWN ART ASSOCIATION AND MUSEUM



A nationally recognized, year-round cultural institution, PAAM fuses the creative energy of America's oldest active art colony with the natural beauty of outer Cape Cod that has inspired artists for generations.

## ADMISSION + HOURS

General admission: \$12.50

Free for PAAM members and those under 16

Days and times are subject to change. Please visit us at [paam.org/tickets](http://paam.org/tickets) or call 508-487-1750 for our current hours and ticket availability.



Mass  
Cultural  
Council



National  
Endowment  
for the Arts  
[arts.gov](http://arts.gov)

This project was supported in part by the Massachusetts Cultural Council, which receives support from the State of Massachusetts and the National Endowment for the Arts.

PAAM is an equal opportunity employer and provider.