

Detail from *Green Studio* by Bill Barrell

# LARGE WORKS

## FROM THE PERMANENT COLLECTION

February 5–May 2, 2021  
Curated by Christine McCarthy



460 COMMERCIAL STREET | PROVINCETOWN MA | PAAM.ORG | 508.487.1750

## LARGE WORKS



Detail from *Autumn Wind* by William H. Littlefield

The permanent collection is an important measure of any museum's value. At PAAM, the holdings of local and regional art is extensive and dynamic, comprising nearly 4,000 works by over 700 Twentieth Century and contemporary artists who have worked in Provincetown and on Cape Cod. Their styles were revolutionary and remain noteworthy in the history of American Art. The PAAM Collection weaves together at least three major art movements—each a significant strand of American art history—and creates perspectives that uniquely position the Provincetown Art Colony as a pertinent fixture to the larger art world.

Each year, PAAM presents at least two exhibitions showcasing some of the recent gifts donated to our permanent collection. As an actively collecting museum, PAAM receives on average nearly 100 new works each year, and these exhibitions allow us to proudly display a selection of those works, some of which represent our first works by an artist in our permanent collection. We extend our deepest gratitude to our new and continuing donors.

Another measure of a museum is how well it uses its collection. The PAAM Collection serves as a foundation for many of our educational programs and exhibitions. Programs for both youth and adults in our Lillian Orlowsky and William Freed Museum School use collection works to stimulate creativity. The Museum School courses take advantage of gallery exhibitions to clarify principles and techniques. Additionally, major museums and galleries borrow exemplary works for exhibitions around the country.

Embedded into PAAM's mission, the collection is truly at the heart of our organization. A glance at the newly released Permanent Collection catalog shows how many hundreds of people have been moved to express their generosity through contributions that make up virtually the whole collection. Amassed over an entire century, PAAM's collection has been donated by people who really cared that the region's art remain here.

—Christine McCarthy, Curator and CEO, PAAM



Detail from *Archipelago* by Sarah Lutz

## LARGE WORKS



Detail from *Trumpet Player* by Gandy Brodie

**Bill Barrell** (b. 1932)  
*Green Studio*, 1988  
Oil on canvas, 34" x 40"  
Gift of Dr. Stephen Bernstein, 1998

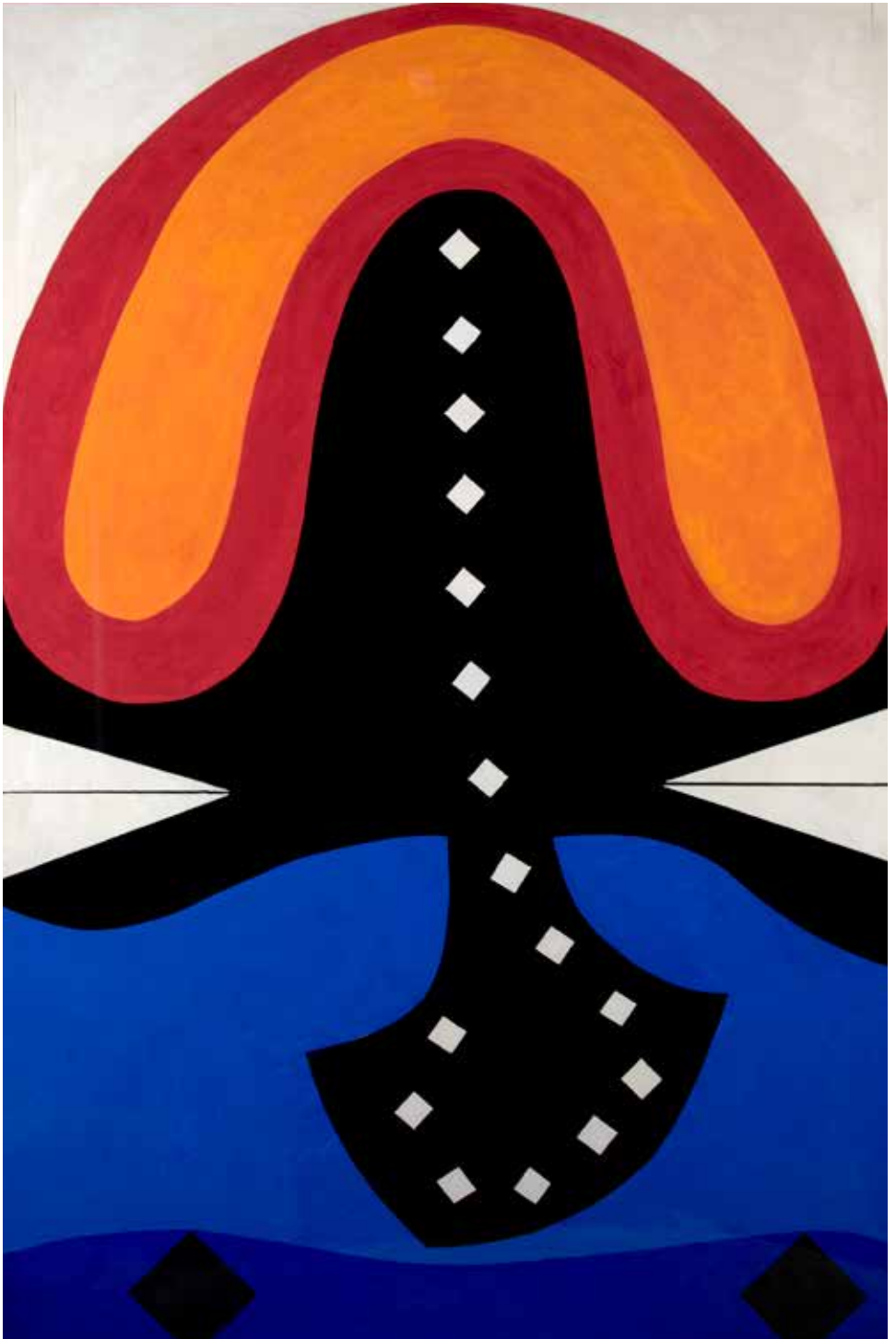
**Robert Beauchamp** (1923–1995)  
*Man with Alligator*, 1982  
Oil on canvas, 43" x 48"  
Gift of Lawrence Shainberg  
and Vivian Bower, 2013

**Gandy Brodie** (1924–1975)  
*Trumpet Player*, n.d.  
Oil on canvas, 50" x 44"  
Gift of the Renate, Hans,  
and Maria Hofmann Trust, 2013

**Fritz Bultman** (1919–1985)  
*Night Enters the Water*, 1983  
Collage of painted paper, 71" x 47"  
Gift from the estate of the artist, 1994

**Nanno de Groot** (1913–1963)  
untitled (abstract forest), 1960  
Oil on canvas, 60" x 52"  
Gift from the estate of Pat de Groot, 2019

**Edward Giobbi** (b. 1926)  
*Optimistic Still Life*, n.d.  
Oil on canvas, 72" x 72"  
Gift of Berta Walker in honor of  
Varujan Boghosian, 2020



Detail from *Night Enters the Water* by Fritz Bultman

## LARGE WORKS



Detail from *Painting No. 12* by Blanche Lazzell

**Blanche Lazzell** (1878–1956)

*Painting No. 12*, 1929

Oil on canvas, 36" x 36"

Gift of Mrs. Robert Sellers, 1956

**William H. Littlefield** (1902–1969)

*Autumn Wind*, 1962

Oil on canvas, 72" x 70"

Gift of James Bakker, 2006

**Sarah Lutz** (b. 1967)

*Archipelago*, 2014

Mixed media on canvas, 40" x 30"

Gift of the artist, 2015

**Irving Marantz** (1912–1972)

*In the Museum*, 1965

Oil on canvas, 69" x 53"

Gift of Julie Rose and Dr. Mady Marantz, 2007

**George McNeil** (1908–1995)

*Beach Scene*, 1968

Oil on canvas, 78" x 72"

Gift of the George McNeil

Charitable Trust, 2002

**Jay Milder** (b. 1934)

*Dream House*, 1970

Oil on canvas, 48" x 52"

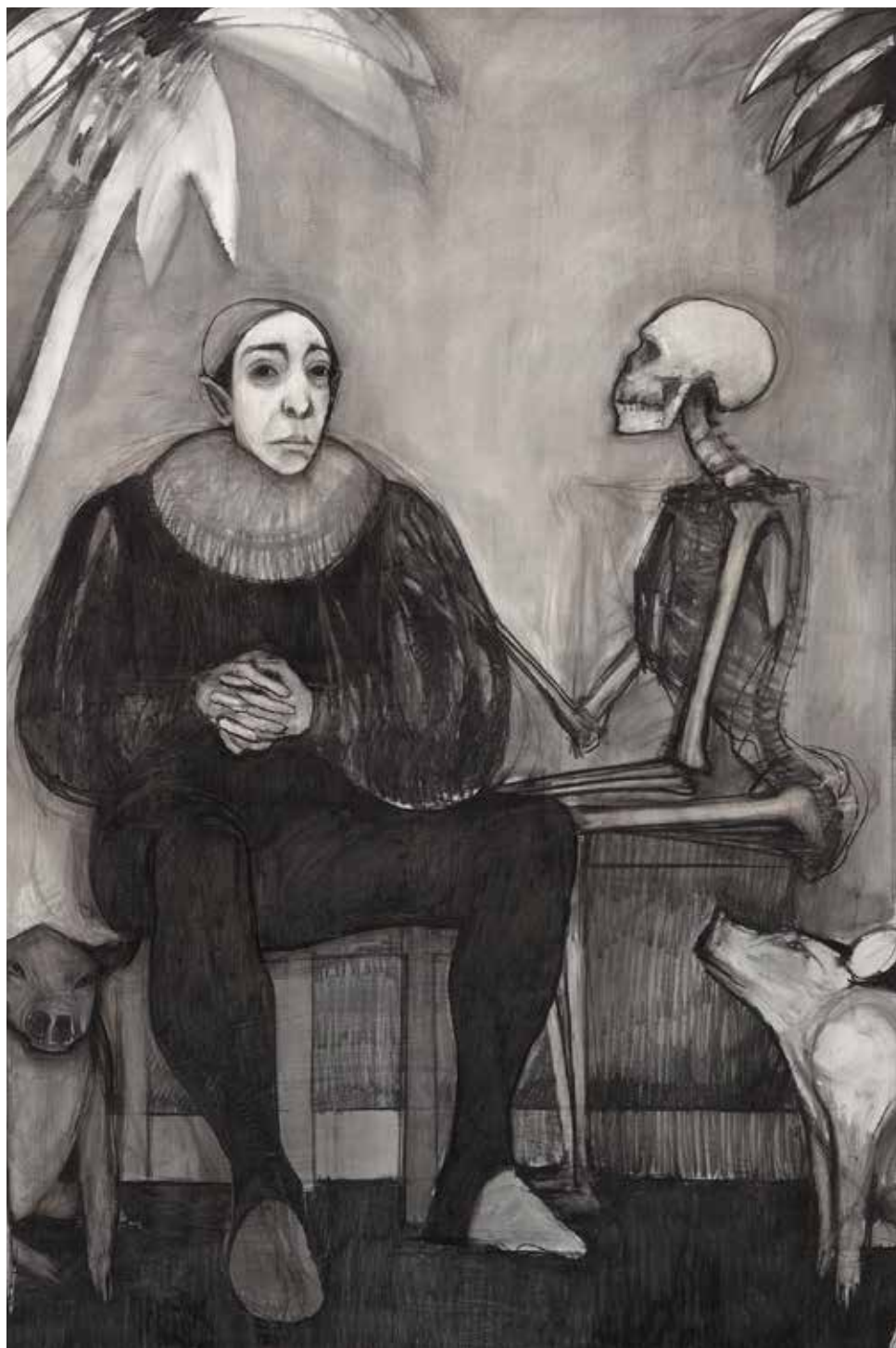
Gift of the artist, 1985

**Selina Trieff** (1934–2015)

*Duo*, 1983

Charcoal on paper, 72" x 60"

Gift of the artist, 2007



Detail from *Duo* by Selina Trieff

# PROVINCETOWN ART ASSOCIATION AND MUSEUM



A nationally recognized, year-round cultural institution, PAAM fuses the creative energy of America's oldest active art colony with the natural beauty of outer Cape Cod that has inspired artists for generations.

## ADMISSION + HOURS

General admission: \$12.50

Free for PAAM members and those under 16

Days and times are subject to change. Please visit us at [paam.org/tickets](http://paam.org/tickets) or call 508-487-1750 for our current hours and ticket availability.



Mass  
Cultural  
Council



National  
Endowment  
for the Arts  
[arts.gov](http://arts.gov)

This project was supported in part by the Massachusetts Cultural Council, which receives support from the State of Massachusetts and the National Endowment for the Arts.

PAAM is an equal opportunity employer and provider.