

Detail from *Clamdiggers* by William Auerbach-Levy

DIRECTOR'S CHOICE

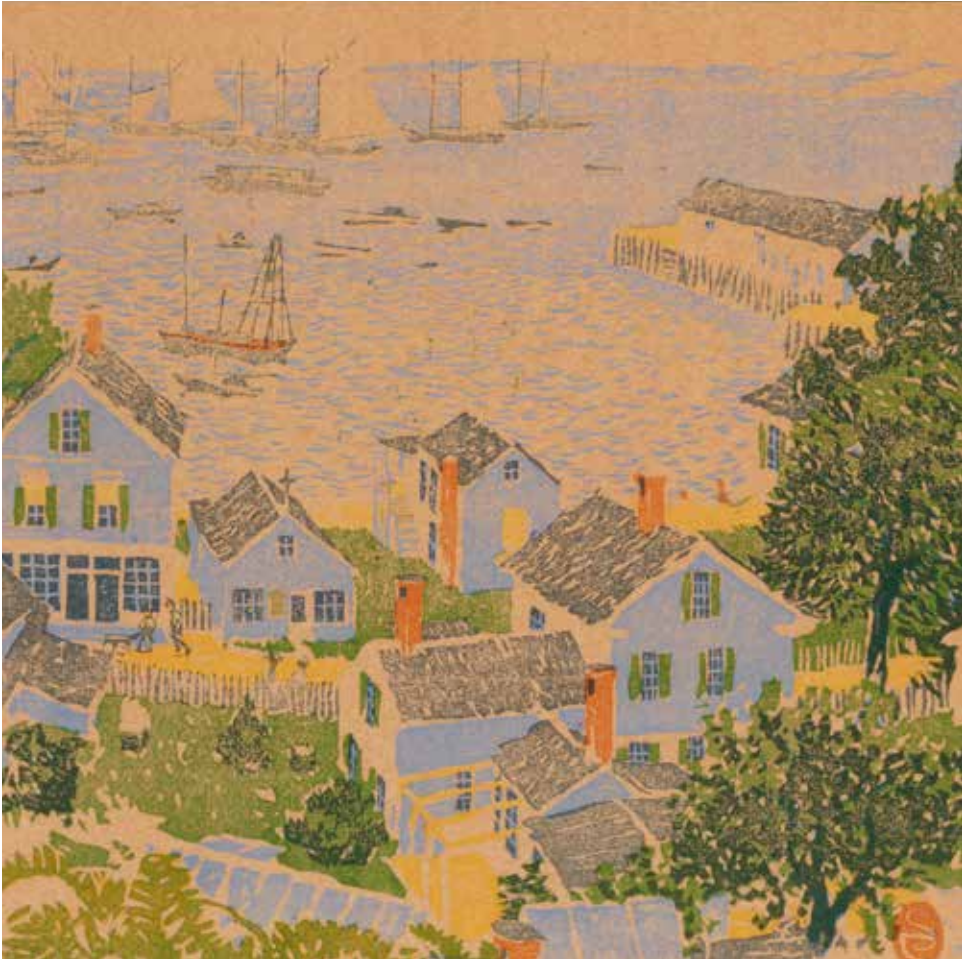
IN MEMORIAM: NAPI VAN DERECK

July 6–September 13, 2020
Curated by Christine McCarthy



460 COMMERCIAL STREET | PROVINCETOWN MA | PAAM.ORG | 508-487-1750

DIRECTOR'S CHOICE



Detail from *Idle Fleet*, n.d. by Gustave Baumann

Historically, my Director's Choice exhibitions have focused on contemporary women artists—not all of them and not because I have limited myself to those parameters. This year is different. This year is bittersweet. This year, my choices are not really my choices—they are Napi's. Napi Van Dereck was a steward of Provincetown art for decades, and incidentally, he was a champion of women artists. This exhibition will feature over 40 artworks from the collection of Napi and Helen Van Dereck. Napi passed away on Christmas Day and this exhibition is a way to honor his legacy and his keen eye. Every picture has a story—the scenes of Town represent “the way it used to was”. Each artwork was carefully selected for a personal reason and he could tell you, in detail, the back story. Some of Provincetown's most iconic Vantage points and important pieces of history are represented by artists such as Gerrit Beneker, Nancy Maybin Ferguson, Ross Moffett, Pauline Palmer, and George Yater among others. We are so grateful to Helen Van Dereck for allowing PAAM to exhibit this unprecedented collection and I would personally like to thank Jim Bakker and Bill Evaul for their assistance in getting this body of work together.



Detail from *Houses* by Daisy Hughes

DIRECTOR'S CHOICE



Detail from *Horse and Carriage on Nickerson Street*, 1902 by George Elmer Browne

**All works from the collection of
Helen and Napi Van Dereck**

Clifford Ashley (1881–1947)

Provincetown Bakery, n.d.

Oil on canvas, 30" x 36"

Gustave Baumann (1881–1971)

Idle Fleet, n.d.

Color woodblock print, 9.5" x 11"

Mending the Seine II, n.d.

Color woodblock print, 9.5" x 11"

Reynolds Beal (1866–1951)

Provincetown, Mass. (Gasoline Dories), 1915

Color woodblock print, 9.75" x 13.5"

Gerrit Beneker (1882–1934)

Cannery Wharf, 1918

Oil on canvas, 20" x 16"

Higgins Lumber Wharf, 1928

Oil on canvas, 20" x 16"

George Elmer Browne (1871–1946)

Horse and Carriage on Nickerson Street, 1902

Oil on canvas, 25" x 30"

Arthur Diehl (1870–1929)

untitled (*Cannery Wharf*), 1928

Oil on board, 24" x 36"

Ada Gilmore (1883–1955)

Figures and Dog, c. 1916

Color white-line woodblock print, 9.5" x 10"



Detail from *Looking Down Bradford Street*, n.d. by Nancy Maybin Ferguson

Sail Loft, c. 1916

Color white-line woodblock print, 10.75" x 11"

Nancy Maybin Ferguson (1872–1967)

Looking Down Bradford Street, n.d.

Oil on canvas, 32" x 40"

Looking South From Monument Hill, n.d.

Oil on canvas, 32" x 40"

Provincetown Rooftops Looking East, n.d.

Oil on canvas, 30" x 36"

Aldro Hibbard (1886–1972)

Provincetown Waterfront, n.d.

Oil on canvas, 25" x 30"

Daisy Hughes (1882–1968)

Houses, n.d.

Oil on canvas, 20" x 16"

Stella C. Edel née Johnson (1893–1970)

Lumber Wharf, c. 1917

Color woodblock print, 7.75" x 10"

Lucy L'Engle (1898–1978)

Clamdiggers, n.d.

Oil on canvas, 30" x 24"

William Auerbach Levy (1889–1964)

Clamdiggers, n.d.

Oil on canvas, 40" x 32"

DIRECTOR'S CHOICE



Detail from *Our Lanes*, n.d. by Pauline Palmer

S. Mathy (19th/20th century)

View of Red Inn, 1897

Oil on canvas, 12" x 18"

Lillian Burk Meeser (1864–1942)

Commercial Street, 1920

Oil on canvas, 16.5" x 12.5"

Ross Moffett (1888–1971)

Ice in Provincetown Harbor, 1934

Oil on canvas, 24" x 36"

Two Fishermen, n.d.

Watercolor on paper, 11.5" x 17.25"

untitled (figures on shore

with fish and horse), 1927

Oil on board, 10" x 12"

Pauline Palmer (1867–1938)

Our Lane, n.d.

Oil on canvas, 26" x 32"

William McGregor Paxton (1869–1941)

Umbrella Shade, n.d.

Color drypoint with soft-ground etching,

4.875" x 7.375"

Bertha Perrie (1868–1921)

Beached Boats, Provincetown, c. 1915

Oil on canvas, 24" x 26"



Detail from *Eight Nudes on a Provincetown Pier*, c. 1917 by Mary Tannahill

Hope Hazard Voorhees Pfeiffer (1891–1970)

untitled (Provincetown house), c. 1943
Color woodblock print, 16.25" x 13"

Ellie Roberts (1884–1935)

Unitarian Universalist Church, 1931
Color woodblock print, 4.75" x 3.75"

Robert Bruce "R.B." Rogers (1907–1981)

Docking for Bait Provincetown, 1933
Color woodblock print, 15" x 11.25"

Mary Burr Russell (1898–1970)

Back Stairs, Provincetown, 1927
Color woodblock print, 14.5" x 11.5"

Unknown artist

untitled (two boats), n.d.
Color woodblock print, 12" x 9.5"

Mary Tannahill (1863–1951)

Eight Nudes on a Provincetown Pier, c. 1917.
Oil on board, 10" x 13"

Ferol Sibley Warthen (1890–1986)

Three Ships, 1952
Color woodblock print, 6.5" x 5"

George Yater (1910–1993)

Art Class, 1935
Watercolor on paper, 13" x 18.5"

PROVINCETOWN ART ASSOCIATION AND MUSEUM



A nationally recognized, year-round cultural institution, PAAM fuses the creative energy of America's oldest active art colony with the natural beauty of outer Cape Cod that has inspired artists for generations.

ADMISSION + HOURS

General admission: \$12.50
Free for PAAM members and those under 16

Days and times are subject to change. Please visit us at paam.org or call 508-487-1750 for our current hours and ticket availability.

  @PAAM1914



Mass
Cultural
Council



National
Endowment
for the Arts
arts.gov

This project was supported in part by the Massachusetts Cultural Council, which receives support from the State of Massachusetts and the National Endowment for the Arts.

PAAM is an equal opportunity employer and provider.