

A detail from the painting 'Wellfleet Harbor' by Joseph Kaplan. The image shows a close-up of a white boat's hull and deck, rendered in a highly expressive, abstract style with thick, visible brushstrokes. The colors are a mix of white, blue, red, and grey, with some darker, more saturated areas. The background is a mix of light and dark tones, suggesting a harbor scene with other boats and structures.

Detail from *Wellfleet Harbor* by Joseph Kaplan

JOSEPH KAPLAN

AND HIS CONTEMPORARIES

March 8–June 9, 2019 | Curated by Christine McCarthy



460 COMMERCIAL STREET | PROVINCETOWN MA | PAAM.ORG | 508-487-1750

JOSEPH KAPLAN AND HIS CONTEMPORARIES



Detail from *In the Museum* by Irving Marantz

The exhibition *Joseph Kaplan and His Contemporaries* pulls together the work of six artists who were influenced by their time spent in Provincetown—Kaplan, Henry Botkin, Irving Marantz, Umberto Romano, Sabina Teichman, and Sol Wilson. Kaplan was a student of Charles Hawthorne in the mid-1920s in Provincetown; afterwards he revisited Provincetown intermittently and began to regard Cape Cod as his summer studio, working there each summer since 1948.

Henry Botkin was a founder of Gallery 256 (1953–55), a cooperative space which ran for 2 years and featured the following artists: Will Barnet, Henry A. Botkin, Byron Browne, Peter Busa, Kenneth Campbell, Victor Candell, Eve Clendenin, Lawrence Kupferman, Leo Manso, Seong Moy, Louise Nevelson, Therese Schwartz, Myron S. Stout, John Von Wicht and Hale Woodruff.

Irving Marantz arrived in Provincetown in 1947 and opened his Provincetown School of Painting in 1949—classes were limited to ten students and on Friday mornings, Marantz would lead a group criticism and an opportunity for students to discuss each other's paintings.

Umberto Romano opened his School of Art in July of 1960. For two months, he offered personal instruction and criticism three mornings a week, and classes



Detail from *Old Docks* by Sol Wilson

in oil painting, watercolors, landscape painting, still-lives, figure drawing, and under-painting and glazing.

Sabina Teichman lived and worked in New York City and Truro, MA from 1934 until her death in 1983. She was an active member of the Provincetown Art Association for over forty years.

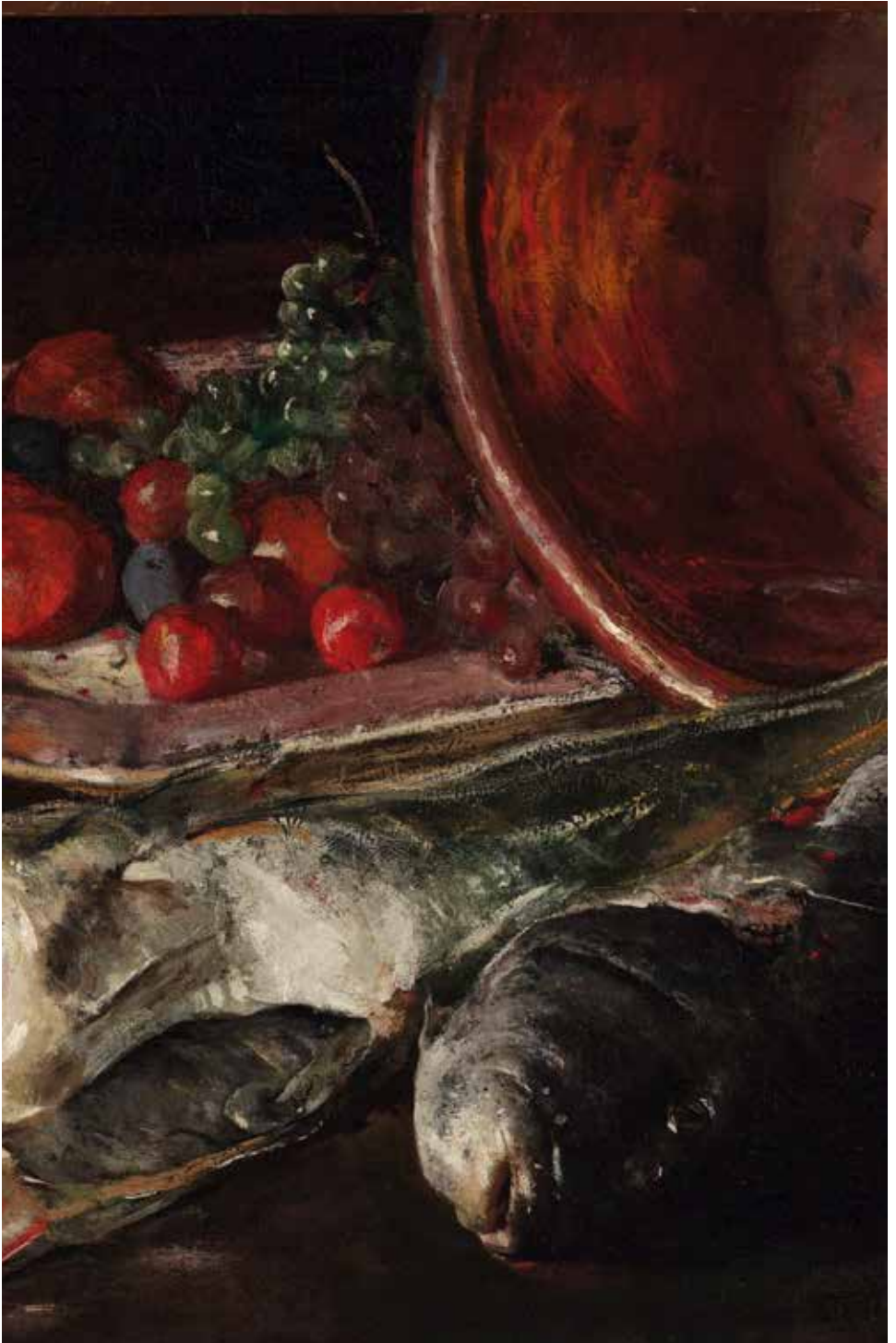
Sol Wilson was part of the summer colony in Rockport, ME in the late 1920s; it was there that he roomed with Joseph Kaplan. Together, they went to Provincetown at the end of World War II. Sol Wilson spent summers in Provincetown from 1945 until his death in 1974.

In 1965, Jacques Joseph Camins interviewed these six artists in Provincetown. The sound tape reel is part of the Archives of American Art at the Smithsonian Institution in Washington, DC.

PAAM graciously acknowledges Karen and Michael Rotenberg for their support of this project.

–Christine McCarthy, Curator and Chief Executive Officer

JOSEPH KAPLAN AND HIS CONTEMPORARIES



Detail from *Still Life with Fish* by Charles Hawthorne



untitled (3 seated figures) by Henry Botkin

Henry Botkin (1896–1983)

Red on Yellow, 1957

Oil on paper, 6" x 12"

Gift of Frederic Varady, 1979

untitled (3 seated figures), 1946

Oil on board, 17" x 22.5"

Gift of Frederick Varaday, 1989,

restoration funded by

Deborah Paine, 2019

Charles Hawthorne (1872–1930)

Still Life with Fish, 1905

Oil on canvas, 28" x 36"

Anonymous gift

Joseph Kaplan (1900–1980)

Fish Shed, n.d.

Oil on masonite, 7.5" x 9.5"

Gift of Lawrence Richmond, 1975

Main Street in Provincetown, n.d.

Gouache on paper, 26" x 19"

Gift from the Richmond Bequest,
1978, restoration funded by Mary Rose
Quagliano and Julie Yager, 1993

Moonlight, n.d.

Oil on board, 26.5" x 46.5"

Courtesy of Karen and

Michael Rotenberg

Moored, n.d.

Oil on canvas, 8" x 11"

Gift of Lawrence Richmond, 1975

Sunrise, n.d.

Oil on masonite, 7.5" x 11.5"

Gift of Lawrence Richmond, 1975

The Wreck, n.d.

Ink on paper, 8" x 12"

Gift of Lawrence Richmond, 1975,
restoration funded by an anonymous
donor, 2019

JOSEPH KAPLAN AND HIS CONTEMPORARIES



Detail from *Figures on the Beach* by Sabine Teichman

untitled (self portrait), n.d.
Oil on canvas, 16" x 20"
Gift of Lynn and John Kearney, 1984

Wellfleet Harbor, n.d.
Casein on paper, 21" x 29.5"
Gift of Karen and Michael
Rotenberg, 2009

The Breakwater, n.d.
Oil on canvas, 16" x 26.5"
Gift of Michael and Karen Rotenberg
in memory of Frederick and Sylvia
Sethur, 2015

untitled (breakwater figures), n.d.
Goauche on paper, 22" x 30"
Gift of Dan Petrucci and
Hans Hoppenbrouwers, 2016

Fish Houses, n.d.
Mixed media on paper, 11" x 14.5"
Courtesy of Bakker Gallery

Boat House, n.d.
Pastel on paper, 11.75" x 16.75"
Courtesy of Bakker Gallery

Beach, n.d.
Mixed media on paper, 12" x 16.5"
Courtesy of Bakker Gallery

Figures at the Beach, n.d.
Mixed media on paper, 10.75" x 15"
Courtesy of Bakker Gallery

Boats and Barrels, n.d.
Gouache on paper, 13" x 18.25"
Courtesy of Bakker Gallery

Provincetown Harbor, n.d.
Casein on paper, 20.75" x 28.25"
Courtesy of Bakker Gallery



Detail from *Chair* by Umberto Romano

Irving Marantz (1912–1972)

The Return, 1959

Oil on canvas, 16" x 34"

Gift of Tom Begner, 1989

In the Museum (alternatively known as *Arena* or *Horses*), 1965

Oil on canvas, 69" x 53"

Gift of Julie Rose and Dr. Mady Marantz, 2007

Umberto Romano (1906–1984)

Chair, 1957

Oil on canvas, 16" x 34"

Gift of V. Henry Rothschild, 1976

Searching Child, 1961

Oil on gessoed panel, 10" x 8"

Gift of V. Henry Rothschild, 1976

Sabina Teichman (1905–1982)

untitled (two women and two children), n.d.

Oil with sand on canvas, 32" x 24"

Gift of Wendy Levine, 1992

Figures on the Beach, n.d.

Oil on canvas, 16" x 20"

Gift of Lawrence Richmond, 1975

Sol Wilson (1894–1974)

Beach at Dusk, n.d.

Oil on canvas, 16" x 20"

Gift of Lily and Alfred Marx, 1968

Old Docks, n.d.

Gouache on board, 20" x 28"

Gift of Lawrence Richmond, 1975

People and Shacks, n.d.

Oil on canvasboard, 10" x 8"

Gift of Dr. and Mrs.

Henry Fogelman, 1991

PROVINCETOWN ART ASSOCIATION AND MUSEUM



A nationally recognized, year-round cultural institution, PAAM fuses the creative energy of America's oldest active art colony with the natural beauty of outer Cape Cod that has inspired artists for generations.

ADMISSION + HOURS

General admission: \$12 | Free for PAAM members

JUNE

Saturday–Thursday 11am–5pm | Friday 11am–10pm

JULY + AUGUST

Monday–Thursday 11am–8pm | Friday 11am–10pm
Saturday + Sunday 11am–5pm

SEPTEMBER

Saturday–Thursday 11am–5pm | Friday 11am–10pm

OCTOBER–MAY

Thursday–Sunday 12–5pm

  @PAAM1914



This project was supported in part by the Massachusetts Cultural Council, which receives support from the State of Massachusetts and the National Endowment for the Arts.

PAAM is an equal opportunity employer and provider.