

**Daniel Ranalli** (1949 - )  
*Threatened and Endangered Species-Truro*, 2008  
from Hopper Redux artSTRAND Portfolio Project 2008  
photomontage inkjet print, 13 x 19"  
Gift of David Murphy, 2008

**Paul Resika** (1928 - )  
*Mussels*, 1986  
oil on canvas, 13 x 18"  
Gift of Berta Walker in honor of Christine McCarthy, 2008

**Paul Resika** (1928 - )  
untitled, 2008  
etching, 11 x 15"  
Gift of the artist, 2008

**Karin Rosenthal** (1945 - )  
*Lieutenant Island Marsh*, 1989  
color photograph, 13.5 x 20.5"  
Gift of the artist, 2008

**Marian Roth** (1944 - )  
untitled (blue)  
pinhole photograph, 30 x 50"  
Gift of the artist, 2008

**Marian Roth** (1944 - )  
untitled (red)  
pinhole photograph, 30 x 55"  
Gift of the artist, 2008

**Howie Schneider** (1930 - 2007)  
*Portrait of Gretchen MacLane*, c.1970s  
mixed media sculpture, 23 x 14 x 9"  
Gift from the estate of the artist, 2008

**Flora Schofield** (1873 - 1960)  
*Harvest of the Sea*, 1933  
color white-line wood block print  
15 x 10.75"  
Acquisition Fund Purchase, Partial Gift of Daniel and Judyth Katz, 2008

**Sidney Simon** (1917 - 1997)  
*The Salesman*  
bronze, 62.5 x 14 x 15"  
Gift of Renee Adriance Simon, 2007

**Sidney Simon** (1917 - 1997)  
*Mother and Daughter*  
bronze, acrylic, 16.5 x 13 x 11"  
Gift of Renee Adriance Simon, 2007

**Ari Stillman** (1891 - 1967)  
*Priscilla #2*, c.1948-49  
embossing, charcoal on paper  
12 x 9.25"  
Gift of The Stillman-Lack Foundation, 2008



**Ari Stillman** (1891 - 1967)  
*Priscilla #3*, c.1948-49  
embossing, charcoal on paper  
12 x 9.25"  
Gift of The Stillman-Lack Foundation, 2008

**Maurine Sutter** (1953 - )  
*Elephant* (large, #7/10)  
black and white photograph (silver gelatin print), 10.5 x 16"  
Gift of the artist, 2008

**Maurine Sutter** (1953 - )  
*Elephant* (medium, #7/10)  
black and white photograph (silver gelatin print), 5 x 7.5"  
Gift of the artist, 2008

**Maurine Sutter** (1953 - )  
*Elephant* (small)  
black and white photograph (silver gelatin print), 3.5 x 6"  
Gift of the artist, 2008

**Tabitha Vevers** (1957 - )  
*Footprints*, 2008  
from Hopper Redux artSTRAND Portfolio Project 2008  
photomontage inkjet print, 13 x 19"  
Gift of David Murphy, 2008

**Patrick Webb** (1955 - )  
*Nuclear Family*, 1983  
oil on canvas, 48 x 52"  
Partial Gift of Robert M. Browne; Roy T. Hammer and James G. Hinkle; Jean S. and Frederic A. Sharf; Patrick Webb, 2008

**Patrick Webb** (1955 - )  
*Nuclear Family*, 2007  
oil on canvas, 48 x 24"  
Partial Gift of Robert M. Browne; Roy T. Hammer and James G. Hinkle; Jean S. and Frederic A. Sharf; Patrick Webb, 2008



PAAM is an equal opportunity provider and employer.

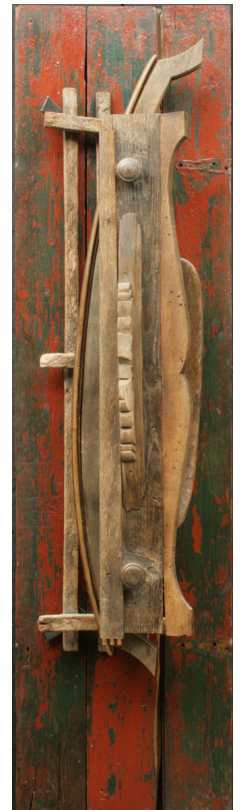


460 Commercial St.  
Provincetown, MA 02657  
508-487-1750  
www.paam.org

Provincetown  
Art Association  
and Museum

# PAAM COLLECTION

## Recent Gifts



curated by  
*Christine McCarthy*

October 17—November 30, 2008

# PAAM COLLECTION: Recent Gifts

**T**he permanent collection is an important measure of a museum's value. And PAAM's holdings of local and regional art is extensive and dynamic, comprising over 2,300 works by 600 twentieth century and contemporary artists who have worked in Provincetown and on Cape Cod. Their styles are noteworthy in the history of American Art. The collection weaves together at least three major art movements—each a significant strand of American art history—and creates perspectives that uniquely position the Provincetown art colony as pertinent to the larger art world. Another measure of a museum is how well it uses its collection. Our collection is at the foundation of many educational programs and exhibitions. Both the curating program and the fall art workshops make use of collection works to stimulate creativity. The accredited courses take advantage of gallery exhibitions to clarify principles and techniques. And major museums and galleries borrow exemplary works for exhibitions. Embedded into PAAM's mission, the collection is truly at the heart of our organization. A glance at *The Permanent Collection* catalog shows how many hundreds of people have been moved to express their generosity through contributions of virtually the whole collection. Amassed over an entire century, PAAM's collection has been donated by people who really cared that the region's art remain here. Because of the recent outpouring of generosity, this fall we are thrilled to present two exhibitions of these gifts. Among the many gems that will be featured are ten pieces by Sidney Simon, including *The Schuykill Maiden*, the cast marble fountain that stands in the sculpture garden. Among the other works are paintings by Robert Beauchamp, Patrick Webb, S. Edmund Oppenheim and Sheila Miles, a former director of PAAM. Several images by Maurine Sutter, Karin Rosenthal, and a whole portfolio by Jules Aarons will add to our growing photography collection. Two drawings from Ary Stillman's *Priscilla Alden* series will appear in Provincetown for the first time since he worked and exhibited here in the 1940s.

Christine McCarthy  
Executive Director of PAAM

**Jules Aarons** (1921 - )  
untitled (Provincetown), c.late 1940s  
black and white photograph, 14 x 11"  
Gift of Gus and Arle Kayafas, 2008

**Jules Aarons** (1921 - )  
untitled (Provincetown), c.late 1940s  
black and white photograph, 14 x 11"  
Gift of Gus and Arle Kayafas, 2008

**Jules Aarons** (1921 - )  
untitled (Provincetown), c.late 1940s  
black and white photograph, 11 x 14"  
Gift of Gus and Arle Kayafas, 2008

**Eric Aho** (1966 - )  
*Corn Hill Storm*, 2007  
oil on canvas, 50 x 70"  
Gift of Kevin Rita, Julie Burnep  
and Phoebe Rita, 2008

**Robert Beauchamp** (1923 - 1995)  
untitled (thrown rider), 1975  
oil on canvas, 40 x 50"  
Gift of Lawrence Shainberg  
and Vivian Bower, 2008

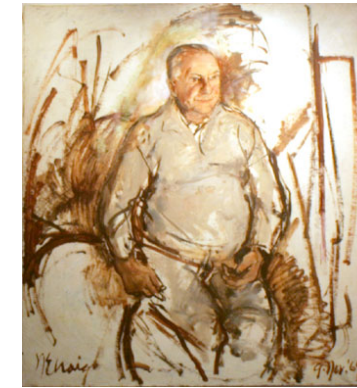
**Paul Bowen** (1951 - )  
untitled, 2008  
from Hopper Redux artSTRAND  
Portfolio Project 2008  
walnut ink on paper, 13 x 19"  
Gift of David Murphy, 2008

**Denny Camino** (1972 - )  
*I Had To Change This Title*, 2001-02  
oil on canvas, 24 x 24"  
Gift of the artist, 2008

**Barbara E. Cohen** (1949 - )  
*Jumping Bean Series I*  
oil on canvas, 46 x 60"  
Gift of the artist, 2008

**Barbara E. Cohen** (1949 - )  
untitled, 2006  
graphite, mixed media on paper  
12 x 12"  
Gift of the artist, 2008

**Barbara E. Cohen** (1949 - )  
untitled, 2006  
graphite, mixed media on paper  
12 x 12"  
Gift of the artist, 2008



**Nancy Ellen Craig** (1927 - )  
*Hans Hofmann (1964.Nov.9th)*, 1964  
oil on canvas, 60 x 54.5"  
Gift of the artist, 2008

**Jay Critchley** (1947 - )  
*Shank Painter Wildlife - Re-Wilding Center*, 2007  
mixed media assemblage sculpture  
with commentary, 24 x 16 x 18"  
Gift of the artist, 2008



**Nanno de Groot** (1913 - 1963)  
*Flats, Northwest Wind*, 1963  
oil on canvas, 40 x 40"  
Gift of Pat de Groot, 2008

**Breon Dunigan** (1961 - )  
*Hopper Landscape*, 2008  
from Hopper Redux artSTRAND  
Portfolio Project 2008  
plaster, acrylic, 13 x 19 x .75"  
Gift of David Murphy, 2008

**Irene Lipton** (1955 - )  
untitled, 2008  
from Hopper Redux artSTRAND  
Portfolio Project 2008  
oil, graphite on panel, 13 x 17"  
Gift of David Murphy, 2008

**Herman Maril** (1908 - 1986)  
*Rocks*, 1965  
ink wash on paper, 29 x 21"  
Gift from the estate of the artist, 2008

**Herman Maril** (1908 - 1986)  
*Young and Old* (portrait of Phil  
Alexander), 1984  
oil on canvas, 40 x 30"  
Gift from the estate of the artist, 2008

**Sheila Miles** (1952 - )  
untitled (red leaves)  
oil on canvas, 9 x 11"  
Anonymous Gift in memory  
of Frank Schaefer, 2008

**Ray Nolin** (1959 - )  
*Chaste*, 1990  
mixed media wall sculpture  
58 x 16 x 7.5"  
Gift of David Jarrett, 2008