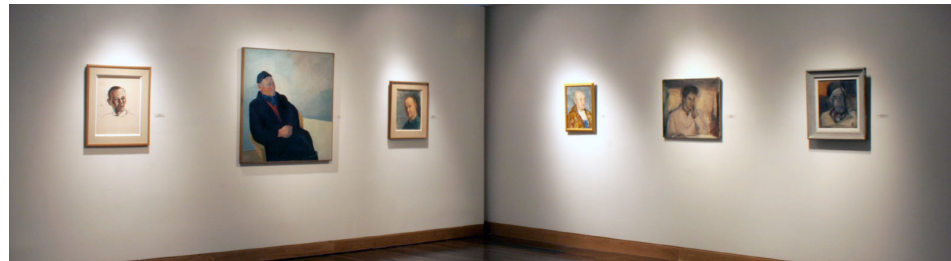


Henry Hensche

Portrait of Sal Del Deo, c.1946
oil on canvas, 24 x 20"
Collection of Salvatore and Josephine Del Deo

Henry Hensche

Portrait, c.1930
oil on canvas, 28 x 24"
Private Collection



Bruce McKain (attrib. to)

Portrait of Afon
oil on canvas, 17 x 14"
PAAM Collection, gift of Helen and Napi Van Dereck

Ross Moffett

Portrait of the Artist's Father
oil on canvas, 30 x 25"
PAAM Collection, gift of Helen and Napi Van Dereck

James Lechay

Head and Hand in Red, 1992
(self portrait)
oil on canvas, 20 x 16"
PAAM Collection, gift of the artist

Artist Unknown

Portrait of Afon
oil on canvasboard, 19.5 x 15.5"
PAAM Collection, gift of Helen and Napi Van Dereck

Harold Lund

Shirley Yater
oil on canvas, mounted, 24 x 20"
Estate of Shirley Pell Yater

Philip Malicoat

Study, 1946
oil on canvas, 22 x 26"
Private Collection

Philip Malicoat

Captain Manuel Zora (Manny Zora), 1955
oil on canvas, 16 x 14"
Private Collection



PAAM is an equal opportunity provider and employer.

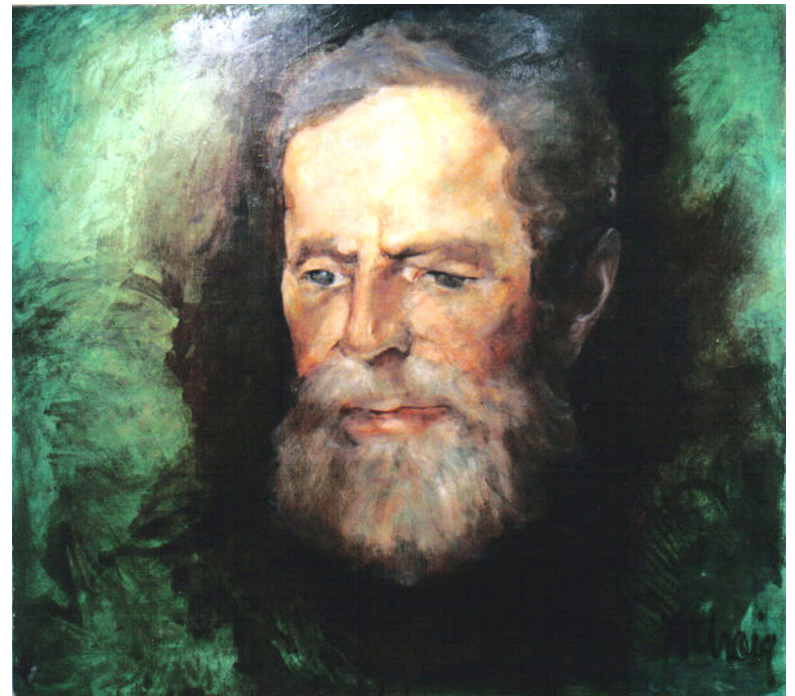


Provincetown
Art Association
and Museum

460 Commercial Street
Provincetown, MA 02657
508.487.1750 www.paam.org

PORTRAITS

Curated by Breon Dunigan and
Christine McCarthy



February 29–April 13, 2008

PORTRAITS

Curated by Breon Dunigan and
Christine McCarthy

Familiar Faces



This show began, as a concept, with Nancy Craig's large portraits of fellow artists. As the portrait show concept developed, the themes of student, teacher mentor and colleague emerged.

An eighteen year old Salvatore Del Deo is captured in a portrait by his teacher, Henry Hensche. He in turn paints fellow artist Afon (Nicholas Afonchicov), a popular model for many of his friends.

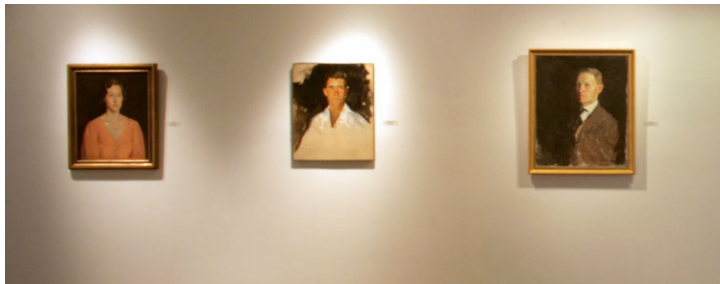
In 1930, Philip Malicoat is the subject of a study by his teacher, Charles Webster Hawthorne. We then see him turn his eye to paint Captain Manuel Zora.

It is my hope that this show will highlight just a few of our friends and familiar faces from the past and the present.

The works included in this exhibition come from private collections and the collection of PAAM.

I would like to dedicate this show to the memory of my old friend, Shirley Pell Yater.

Breon Dunigan



Nancy Ellen Craig
Norman Mailer, c.1972
oil on canvas, 80 x 92"
Collection of the artist

Nancy Ellen Craig
Edwin Dickinson, c.1974
oil on canvas, 77 x 86"
Collection of the artist

Nancy Ellen Craig
Preston Carter, c.1972
oil on canvas, 40" diameter round
Collection of the artist

Salvatore Del Deo
J.B. (John Brown), 1995
oil on canvas, 14 x 12"
Collection of the artist

Salvatore Del Deo
Afon, 1969
oil on canvas, 42 x 40"
Collection of the artist

Charles W. Hawthorne
Head #1
oil on canvas, 14.5 x 10.5"
PAAM Collection



Nancy Ellen Craig
Georgio Cavallon, c.1982
oil on canvas, 40" diameter round
Collection of the artist

Nancy Ellen Craig
Hans Hofmann, 1964
(one 40-minute session)
oil on canvas, 60 x 54.5"
Collection of the artist

Charles W. Hawthorne
Girl with Canary
oil on board, 29.5 x 24"
PAAM Collection
gift of Marguerite Wilson

Charles W. Hawthorne
Sketch of Phil Malicoat, 1930
oil on canvas, 26 x 22"
Private Collection