

**William P. Hamlin**

*Eileen* 1/10, 2005  
woven photograph, 15 x 15"  
\$1300.

Represented by Schoolhouse Gallery

**Anne Ierardi**

*Southwest*, 2006  
oil on canvas, 24 x 30"  
\$1300.



Victor Powell

**Laurie Israel**

*Nuclear Family*, 2006  
oil on paper, 16 x 20"  
NFS

**Megan Karlen**

*Everybody Loves*, 2007  
stoneware, 15 x 8 x 4"  
\$750.

**Louise La Montagne**

*Rings*, 2007  
mixed media on board, 7 x 5" \$300.  
Represented by Truro Fine Arts Studio

**Michael Moss**

*One*, 2008  
oil on panel, 10 x 12" \$900.  
Represented by Impulse Gallery

**Carol Odell**

*Rural Transport*  
oil on panel, 20 x 20"  
\$2200.  
Represented by Left Bank Gallery, Wellfleet

**Victor Powell**

untitled, 2008  
laminated leather, mountain goat  
9 x 6 x 4.5"  
\$600.

**Shirl Roccapiore**

*Standing Nude*  
oil on canvas, 60 x 30"  
\$3600.

**Mike Wright**

*Small Provincetown Dumpster*, 2008  
found painted wood, 24 x 14 x 14"  
\$1800.  
Represented by Julie Heller Gallery



*This exhibition has been generously sponsored in part by Irma Ruckstuhl. PAAM is an equal opportunity provider and employer.*

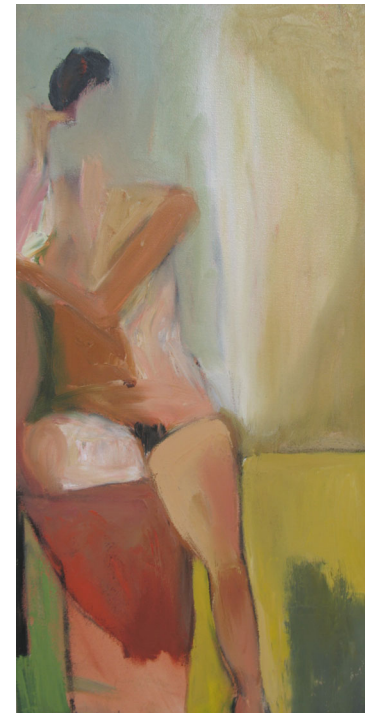


Provincetown  
Art Association  
and Museum

460 Commercial Street  
Provincetown, MA 02657  
508.487.1750 www.paam.org

# MEMBERS JURIED EXHIBITION

*juror: Edsel Williams*



Vivian Dickson

*April 18–May 11, 2008*

# MEMBERS JURIED

*juror: Edsel Williams*

**T**he artworks selected best represent two of the current and historically prominent fields of exploration for artists living and working on the Cape: abstract works, and representational works in multiple mediums. Of the 200 artworks submitted I chose 22. Not because these are of better quality, but because they, as a group, make a better exhibition. Many PAAM regulars may find this exhibition minimal, this is intentional. It gives us space to better appreciate some of the many fine works considered. Much gratitude to all the artists who made submissions for the exhibition. It is a great personal and professional pleasure to experience your work, and know that this culturally rich environment we all know and love, STILL thrives.

*Edsel Williams*

*April 2008*



Carol Odell

## **Lee Brock**

*Blue Whale I*

oil on canvas, 20 x 20"  
\$500.

## **Sue Butler**

*Kate in Sunglasses*, 2007

acrylic on canvas, 10 x 8"  
\$390.

## **Barbara Cantor**

*It's Not Easy Being Green*, 2008

oil on linen, 24 x 24"  
\$1200.

## **Mary Cassel**

*Kathleen, Daughter of Houlihan*

oil on canvas, 20 x 16"  
\$400.

## **Larry R. Collins**

*South China Sea*

oil on canvas, 34 x 26"  
\$3000.

Represented by Larry Collins Fine Art

## **Polly Coté**

*Model at Rest*, 2008

sumi ink on paper, 17 x 21"  
\$200.

Represented by Cortile Gallery

## **Gabriel T. D'Agostino**

*Understanding*

oil on canvas, 34 x 47"  
\$1400.

## **Vivian Dickson**

*Liza*, 2007

oil on canvas, 20 x 10"  
\$600.

Represented by Harvest Gallery

## **Sarah Dineen**

*Becoming*, 2008

acrylic on canvas, 42 x 32"  
\$3000.

Represented by Ezair Gallery, NY

## **Orfeo Fabbri**

*Tuesday Morning*

oil on canvas, 28 x 22" \$800.

Represented by Blue Day Spa, PSAG, Centerville Yoga



Larry R. Collins

## **Miriam Fried**

*Japan Impressions*, 2008

acrylic on wood (triptych), 30 x 72"  
\$3750.

## **Tristan Govignon**

*Windswept*, 2007

bronze, 10 x 16 x 17"  
\$6500.