



George L.K. Morris (1905 - 1975)

The Rivals, 1962-63
oil on canvas, 43 x 37"

Tom Newton (1982 - present)

TN112, 2000
oil on canvas, 18 x 14"

Les Seifer (1969 - present)

Drunk, 1999
oil on canvas, 24 x 18"

Theodoros Stamos (1922 - 1997)

Thaw, c.1947
oil on board, 23 x 19"

Craig Stockwell (1952 - present)

untitled
acrylic on panel, 34 x 37.5"

David Storey (1948 - present)

Volunteer, 2006
oil on canvas, 23 x 17.25"

John Walker (1937 - present)

Form & Image, 1982-83
oil on canvas, 86 x 67"

Frederick Judd Waugh (1861 - 1940)

View from Desolation Sound, 1914
oil on board, 7 x 9"

Frederick Judd Waugh (1861 - 1940)

Below the Cliff (Monhegan Island, Maine)
oil on Masonite, 24 x 30"
*(This work is displayed in the foyer
of the front entrance to PAAM.)*

Karl Zerbe (1903 - 1972)

Landscape with Letters, 1953
polymer on canvas, 44 x 38"



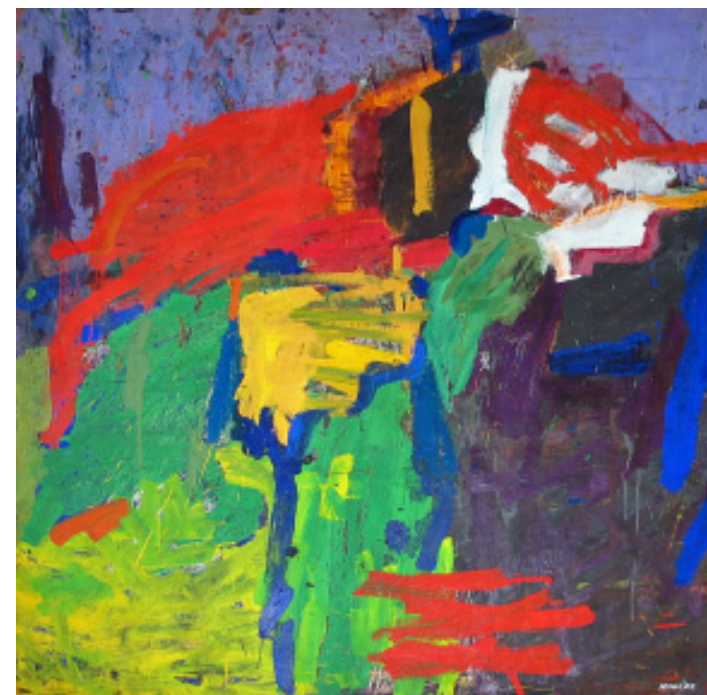
PAAM is an equal opportunity provider and employer.



**Provincetown
Art Association
and Museum**

460 Commercial St.
Provincetown, MA 02657
508-487-1750
www.paam.org

Provincetown and Beyond:



The Collection of John Raimondi

curated by *Chris McCarthy*

April 22—June 19, 2011

John Raimondi is a contemporary American sculptor of international distinction and renown. To date he has completed more than 100 monumental sculptures for public, private and corporate collections worldwide. But this exhibition does not feature the sculpture that John has created; it features art works that John has collected. Important Provincetown icons are coupled with contemporary artists to showcase a stunning exhibition that primarily explores Abstract Expressionism.

I am extremely grateful to John for making these works available to PAAM. His keen eye, passion and acute sensibilities have afforded him the capacity to amass a highly significant collection of art, some of which has never been seen by the public.

Raimondi's relationship with each individual piece of art is extraordinary and I invite you to hear him speak about his collection and its acquisition on **Thursday, May 12 at 6:30 PM.**

*Christine McCarthy
Executive Director*



Gregory Amenoff (1948 - present)
The Last Light (The Rio Grande), c.1981
oil on canvas, 60.25 x 72"

Peter Busa (1914 - 1985)
Indian Space Series, c.1948
gouache on paper, 24 x 20"

Russ Gerlach (1948 - present)
Rum Sunrise, 2008
oil on canvas, 54 x 48"

Tjibbe Hooghiernstra (1957 - present)
Dotime, 1999
mixed media on paper, 27 x 23"

Franz Kline (1910 - 1962)
untitled, 1953
ink on paper, 19.5 x 17"

Loren MacIver (1909 - 1998)
Crocus, 1944
oil on Masonite, 14 x 10.5"

Gregory Amenoff (1948 - present)
Portal, 1985
oil on canvas, 25 x 24"

Peter Busa (1914 - 1985)
Woman on Chair, c.1950s
pastel on paper, 29 x 22"

Grace Hartigan (1922 - 2008)
The Persian Robe, 1953
color serigraph, 11.5 x 8"

Budd Hopkins (1931 - present)
untitled, 1961
oil on paper, 10.75 x 13.5"

Karl Knaths (1891 - 1971)
untitled
oil on board, 15.5 x 19.5"

George McNeil (1908 - 1995)
Jezabel, 1963
oil on canvas, 80 x 74"

Byron Browne (1907 - 1961)
Provincetown Sunset, 1955
gouache on paper, 27 x 32"

Willem De Kooning (1904 - 1997)
Two Figures, 1973
lithograph, #2/100, 22 x 30"

Marsden Hartley (1877 - 1943)
Still Life with Pears, 1923
lithograph, 24 x 22"

Budd Hopkins (1931 - present)
untitled, 1958
oil on paper, 21.5 x 18.5"

M.P. Landis (1965 - present)
WD897, 2001
mixed media on folded paper, 10 x 8.75"

George McNeil (1908 - 1995)
Improvisation More, 1946
gouache, ink, sand on green paper, 20 x 28"

Fritz Bultman (1919 - 1985)
Sleeper—Blue Night, 1952
gouache on paper, 23 x 29"

Edwin Dickinson (1891 - 1978)
Toward Overlook Mountain (Winter), 1914
oil on board, 16 x 16"

Willy Heeks (1951 - present)
Safely Kept, 2006
acrylic, oil on canvas, 53 x 58"

Earl Kerkam (1891 - 1965)
Self Portrait, c.1958
oil on board, 14 x 12.5"

M.P. Landis (1965 - present)
Witness, 1994
oil, graphite on panel, 16 x 13"

Wes Mills (1960 - present)
untitled, 1997
graphite, pigment on paper, 5 x 5.25"